

## Installation Instructions BL 2000

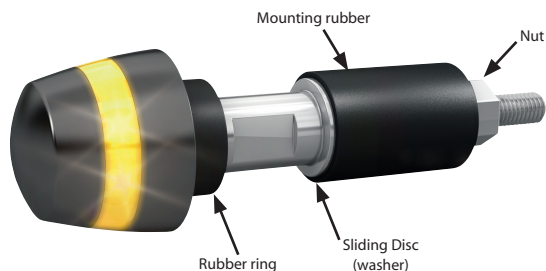
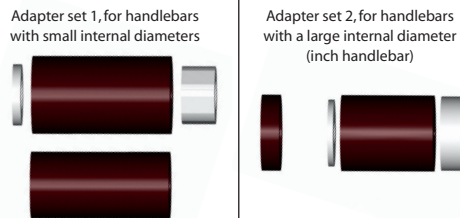
### Frontal directional indicators

Dear customer,

Thank you for choosing Kuryakyn. Please read and understand these instructions before deciding whether you would like to do the installation yourself or have it done by a professional.

### OVERVIEW OF COMPONENTS

1. BL 1000 PL
2. Rubber ring
3. Sliding disc (washer)
4. Mounting rubber
5. Nut
6. Adapter set 1, for handlebars with small internal diameter
7. Adapter set 2, for handlebars with a large internal diameter (inch handlebar)
8. Three cord connectors (not shown)



All Kuryakyn by Kellermann lighting products are ECE-approved for motorcycles as documented by the approval mark engraved into the housing or lens. This means that you may use the products instead of the original turn signals without any entry in your vehicle documents or presentation to a vehicle inspection organization. **You do not need to carry any documentation with you. This applies to all motorbikes licensed under EU law and the corresponding lights. Certificates are available at [www.Kuryakyn.com](http://www.Kuryakyn.com).** If you would like suitable rear directional indicators, we would like to recommend the micro 1000 series. You can choose from among over twenty variations.

**ATTENTION!** Kuryakyn by Kellermann lighting is not DOT or FMVSS #108 compliant.

**ATTENTION!** The warranty will not apply if the turn signal has not been correctly installed or connected to the electrical supply on your motorcycle. Do not carry out the installation unless you are qualified to do so; otherwise, leave the installation and connection work for your indicator to a qualified repair shop. The warranty does not apply to damage due to wrong connection or excess voltage (such as due to a defective alternator regulator).

**ATTENTION!** Improper mechanical installation or orientation of turn signals may invalidate your motorcycle's roadworthiness and insurance protection, or even lead to accidents. Before every usage of your vehicle, check whether the indicators are correctly mounted and fully functional.

**ATTENTION!** Your turn signals may heat up during use. Contact with bare skin or heat-sensitive objects may lead to damage or injury.

**ATTENTION! Voltage – 19v Max. Over voltage voids warranty**

Motorcycles with voltage peaks can damage Kuryakyn by Kuryakyn by Kellermann products. The problem can be solved easily by installing suppressor diodes. Verify before installation that your vehicles electrical system operated in a normal 12-15 v range with no peaks that exceed 19 v.

Warranty is void if operating with over-voltage.

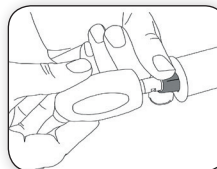
**CLEANING ADVICE!** Your new Kuryakyn by Kellermann products are premium-quality products. In order to enjoy them long time and maintain the warranty we recommend not to use any cleansers with alkaline/acid and/or grinding substances or steel wool. We also advice not to use steam cleaners.

### INSTALLATION

**ATTENTION!** Make sure that your motorcycle is standing firmly before you start work, as a fall may lead to damage to the motorcycle or injury to you or others.

1. The BL 2000 can be mounted onto handlebars that are hollow and at an imagined perpendicular transversal plane have an angle of 9-25 to the rear. Remove the original turn signals and the original handlebar covers or handlebar vibration dampers so that the hollow handlebar ends can receive the BL 2000.
2. The wires of the BL 2000 run inside the handlebar and must be drawn through to an appropriate position. For this purpose, drill a hole if needed into the handlebar and assure a smooth passage of the wire without sharp edges.
3. Select the largest of the four mounting rubbers that will fit into the end of the handlebar and position the fitting rubber rings and nuts. Position the rubber ring at the point between the indicator light and the screw thread. For handlebars with small internal diameters, the BL 2000 is to be installed without a rubber ring.

4. First position the sliding disc (washer) and then the mounting rubber onto the indicator's screw thread and screw on the nut.
5. Hold the indicator tight with one hand and screw the nut with a suitable tool until the mounting rubber is only lightly clamped when it is inserted into the handlebar.
6. Draw the wire through the handlebar (it can be helpful to use a thin wire loop to pull it through), as far as possible. The wires should not be loose inside the handlebar when the BL 2000 is installed. Turn the BL 2000 counter-clockwise a few times and then insert it into the handlebar.
7. Note the position of the BL 2000 and screw it in a clockwise direction. The indicators should cast its light forwards and parallel to the ground. If it does not do so, loosen the indicator, pull it out and put it back in at an angle that will align them correctly once they are screwed in. Repeat this until the direction of the light is correctly aligned. Fine alignment is described in step 9.



### ELECTRICAL CONNECTION

8. Cut the wires of the existing turn signal between the turn signal and the connector. By doing this the wiring harness stays untouched.

Connect your micro 1000® PL as follows:

- Connect the grey wire of the turn signals to the positive wire of the wiring harness.
- Connect the black wire of the turn signals to the ground wire of the wiring harness.
- Take the grey and white wire of the turn signals and connect it to a positive wire of the running lightings.

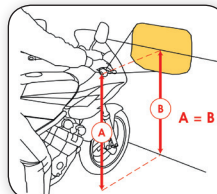
Connection of the grey and white wire for **ECE countries:**

- Take the grey and white wire of the turn signals and connect it to a positive wire of the dashboard lighting or the original position light. The original position light has to be deactivated.
- You can also connect the position lights through their own switch, but regulations require that you fit an additional green pilot light; both are available from your specialized electronics retail outlet.

To connect the wires of the indicator to the wires of the original connector use the provided crimp connectors and shrink tubings. First push one of the shrink-on tubes over one of the wires you want to connect and remove 1/4" of insulation on the end of each cable. Then push both bare ends of the wire into a crimp connector and crimp it with an appropriate tool. Then pull the shrink-on tube over the connection and heat it up equally until it fits tight over the complete length of the connector.

Test the function of the turn signals.

Route the cables in a way that they are protected from splash water and fasten them using zip ties.



9. The proper alignment is necessary for safety when driving in traffic and a required component for vehicle approval; a vehicle with incorrectly aligned lights is easily not noticed.

In order to align the BL 2000, position the motorcycle at a right angle to a light-colored wall. Sit on the motorcycle and measure the height of the middle of the indicator glass above the (flat) floor. Make a mark on the wall at this height. This mark on the wall must be exactly in the middle of the indicator's light field. If necessary, adjust the BL 2000 as described in step 7.

This completes the installation process.

### INDICATOR FLASH RATE

If after installation you experience an increased flashing frequency, or all turn signals light up at the same time instead of only two, we recommend you use a load-independent Kellermann relay (art. no. 123970). If you cannot use this relay with your vehicle, you can also install power resistors that can be connected parallel to the indicators. Attach the resistors in such a way that the heat can adequately be discharged.

**ATTENTION!** The power resistors will become very hot after long-term usage of the turn signals. Make sure that no components are damaged by this heat.

We are happy to answer any questions you may have with regards to converting your indicators, we are certain we can help you.

If you are not sure which electronic equipment you require, please contact us via <http://www.kuryakyn.com>, [info@kuryakyn.com](mailto:info@kuryakyn.com), or call us: **886-277-9598**.

**ATTENTION!** Before each use of the vehicle, check the functionality of the turn signals.

The Kuryakyn by Kellermann BL 2000 is equipped with the tried-and-trusted **Longlife Protection Guard®** circuit, which ensures extremely long life with LED technology. It is not necessary to replace the illuminate and, due to the laws for device approval, it is not allowed.