






## PASSENGER DRINK HOLDER WITH BASKET—'14-UP TOURING 1692

**THANK YOU FOR CHOOSING KÜRYAKYN!**

**PROTECT YOURSELF AND OTHERS FROM POSSIBLE INJURY AND PROPERTY DAMAGE OR LOSS. PAY CLOSE ATTENTION TO ALL INSTRUCTIONS, WARNINGS, CAUTIONS, AND NOTICES REGARDING THE INSTALLATION, USE, AND CARE OF THIS PRODUCT.**


 <b>WARNING</b>	<b>THIS INDICATION ALERTS YOU TO THE FACT THAT IGNORING THE CONTENTS DESCRIBED HEREIN CAN RESULT IN POTENTIAL DEATH OR SERIOUS INJURY.</b>
 <b>CAUTION</b>	<b>This indication alerts you to the fact that ignoring the contents described herein can result in minor or moderate potential injury.</b>
 <b>NOTICE</b>	<b>This indication alerts you to the fact that ignoring the contents described herein may negatively affect product performance and functionality or damage the product itself or the product to which it is being attached.</b>

**MAKE SURE THE FOLLOWING PARTS HAVE BEEN INCLUDED IN THE KIT:**

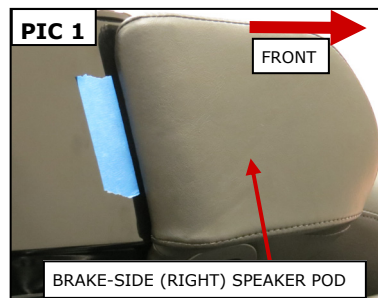
- 1 Passenger Drink Holder Arm
- 1 Passenger Drink Holder Assembly
- 1 Hardware Kit:
  - 1 Alcohol Pad
  - 1 Protective Tape
  - 1 1/4" Wave Washer
  - 1 1/4" Split Lock Washer
  - 1 Thumb Nut
- 1 Installation Instructions

### TOOLS SUGGESTED:

Set of combination wrenches, set of Torx drivers, set of sockets and ratchet, warm soapy water and a clean rag, masking tape, in-lbs torque wrench

 **NOTICE** These installation instructions contain important information. Ensure that the end user receives this copy and is aware of its importance for future reference.

- STEP 1** Read and understand all steps in the instructions before starting the installation. Park the motorcycle on a hard, level surface and turn off the ignition.
- STEP 2** Use masking tape to mark the rearward edge of the right-side speaker pod as shown in **PIC 1**.
- STEP 3** Open the Tour Pak™ lid.



**CUSTOMER SERVICE**  
877.370.3604 (toll free)

**INSTALLATION QUESTIONS**  
techsupport@kuryakyn.com  
or call 715.247.2983

### LIMITED WARRANTY

Kuryakyn warrants that any Kuryakyn products sold hereunder, shall be free of defects in materials and workmanship for a period of one (1) year from the date of purchase by the consumer excepting the following provisions:

- Kuryakyn shall have no obligation in the event the customer is unable to provide a receipt showing the date the customer purchased the product(s).
  - The product must be properly installed, maintained and operated under normal conditions.
  - Kuryakyn makes no warranty, expressed or implied, with respect to any gold plated products.
  - Kuryakyn shall not be liable for any consequential and incidental damages, including labor and paint, resulting from failure of a Kuryakyn product, failure to deliver, delay in delivery, delivery in nonconforming condition, or for any breach of contract or duty between Kuryakyn and a customer.
- Kuryakyn products are often intended for use in specific applications. Kuryakyn makes no warranty if a Kuryakyn product is used in applications other than intended.
- Kuryakyn electrical products are warranted for one (1) year from the date of purchase by the consumer. L.E.D.'S contained in components of Kuryakyn products will be warranted for defects in materials and workmanship for 3 years from the date of purchase where as all other components shall be warranted for one(1) year. This includes, but is not limited to; control modules, wiring, chrome & other components.

• Kuryakyn makes no warranty of any kind in regard to other manufacturer's products distributed by Kuryakyn. Kuryakyn will pass on all warranties made by the manufacturer and where possible, will expedite the claim on behalf of the customer, but ultimately, responsibility for disposition of the warranty claim lies with the manufacturer.

### ABOUT OUR CATALOG

For purchasing Kuryakyn® products, you can receive a complete catalog free of charge. Send the Proof-of-Purchase below with your address to: Kuryakyn  
454 County Road V V  
Somerset, WI 54025-9031  
Please indicate either Accessories Catalog for Harley-Davidson® or GL & Metric Cruisers.

Be sure to ask your local dealer about other Kuryakyn® products, the motorcycle parts and accessories designed for riders by riders.

©2005 Kuryakyn USA® All Rights reserved.



**STEP 4** On the front of the Tour Pak™, locate and remove the two Torx screws shown in **PIC 2**. Removing the screws will release the tether anchor.

**NOTICE**

**With the screws removed, the tether anchor can retract rapidly causing damage to the motorcycle. Secure the tether while the screws are being removed.**

**NOTE:**

**Get someone to help secure the Tour Pak™ lid until the tether anchor is reattached to prevent the lid from opening too far.**

**STEP 5** Remove the Tour Pak™ liner; pull upward on the rear of the liner to remove it.

**STEP 6** With the lid open, reattach the tether anchor. Do not over tighten the screws.

**STEP 7** Remove the two lower hex head screws and washers shown in **PIC 3**; set them aside for now they will be reused. Let the power outlet (if equipped) hang for now.

**NOTICE**

**Avoid damage to the motorcycle. Protect painted surfaces with a soft cloth or service cover.**

**STEP 8** Cover the right-side saddlebag lid with a soft cloth or service cover. Refer to **PIC 3**. Inside the Tour Pak™, loosen, but do not remove, the top hex head screw until the speaker pod can be removed. Set the speaker pod on the soft cloth or service cover. Ensure the bass port and gasket remain in place.

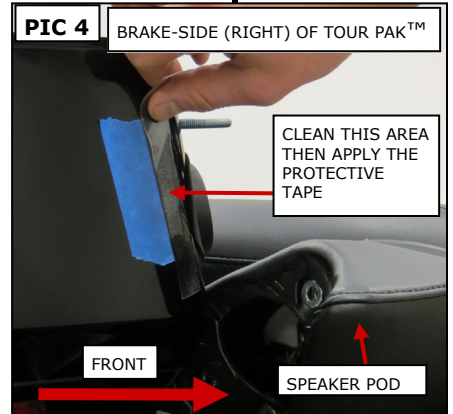
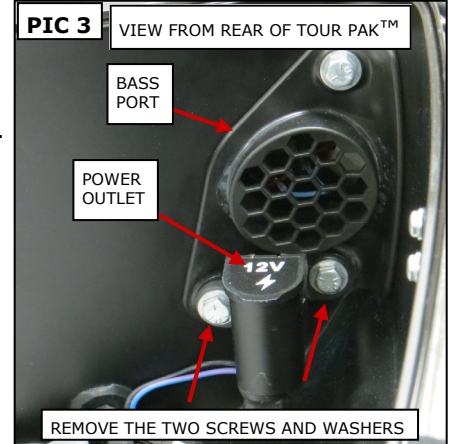
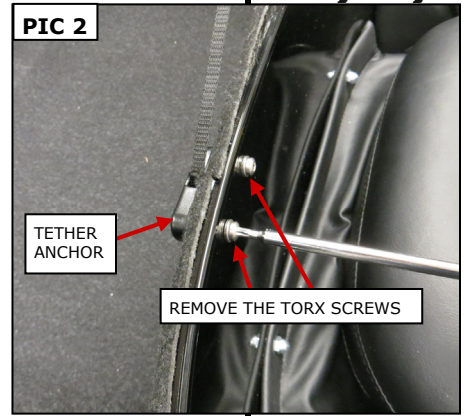
**STEP 9** Using warm soapy water and a clean rag, remove all dirt, polish, and other debris from the area shown in **PIC 4**. Wipe the area with the included alcohol pad to remove any remaining polish/wax. Allow the area to dry completely.

**STEP 10** Remove and discard the backing from the Protective Tape.

**STEP 11** Refer to **PIC 4**. Using the masking tape mark as a guide, apply the Protective Tape to the Tour Pak™ just forward of the masking tape; smooth out any air bubbles with your finger. Remove and discard the masking tape.

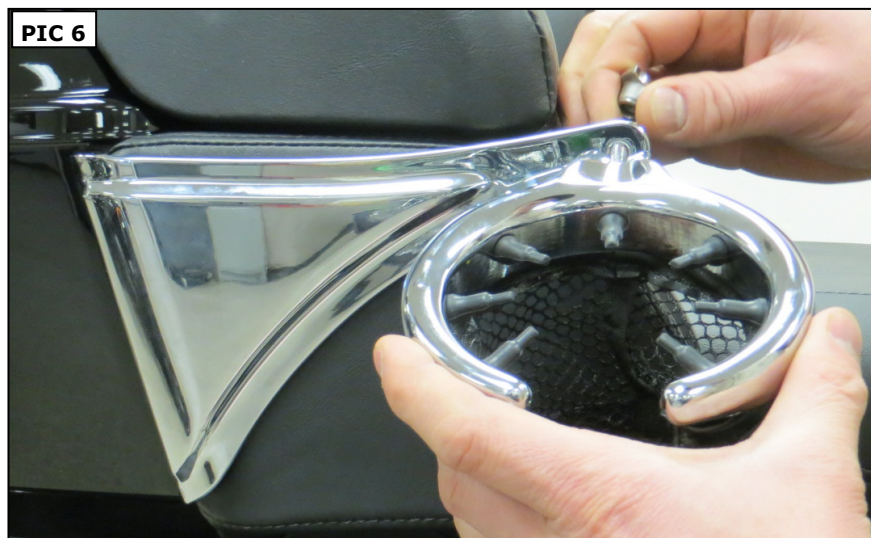
**STEP 12** Refer to **PIC 5**. Ensure the bass port flange is fully seated in the hole, then position the included Passenger Drink Holder Arm over the top screw; align the speaker pod with the bass port flange and attach it with the top screw. Leave the screw finger tight for now.

**STEP 13** Inside the Tour Pak™, align the power outlet with the lower holes. Insert the two lower screws and thread them into the speaker pod; torque the three hex head screws to 20-25 in-lbs (2.3-2.8 Nm).



-cont.-

- STEP 14** Get someone to help secure the lid; remove the tether anchor, reinstall the liner, then reinstall the tether anchor; **torque the two Torx screws to 25-35 in-lbs (2.8-3.9 Nm)**. Close the lid.
- STEP 15** Locate the Drink Holder; place the included Wave Washer over the threaded stud on the Drink Holder.
- STEP 16** Refer to **PIC 6**. Insert the threaded stud through the hole in the Arm. Place the included Lock Washer over the stud; secure the Drink Holder to the Arm with the included Thumb Nut. Use a open end wrench to tighten the thumb nut.

**CAUTION**

This product was designed for use as a drink holder only. Do not use the drink holder to mount or dismount the motorcycle. Do not apply your body weight to the drink holder to adjust your seating position. Damage and injury may result from improper use.

**NOTICE**

It is the end user's responsibility to ensure that all of the fasteners (including pre-assembled) are tightened before operation of the motorcycle. Küryakyn will not provide warranty coverage on products or components lost due to improper installation or lack of maintenance. Periodic inspection and maintenance are required on all fasteners.

*Ride On!*PAGE  
**3**