



IMPORTANT NOTICE

Before installing this Belt Drive Primary, read through these instructions completely; this will familiarize you with the way in which the parts fit together and the tools needed to complete the job.

The PM Contour Primary involves alterations to your motorcycle and may void your factory warranty. PM STRONGLY recommends this installation be done by an experienced motorcycle mechanic.

Before performing any installation steps, disconnect the motorcycle's battery to eliminate any possibility of damage to the electrical system or injury to yourself due to a short circuit.

DISCLAIMER

These Performance Machine parts are designed for high performance motorcycle applications and are intended for the very experienced rider only. The installation of these Performance Machine parts may adversely affect or void your factory warranty.

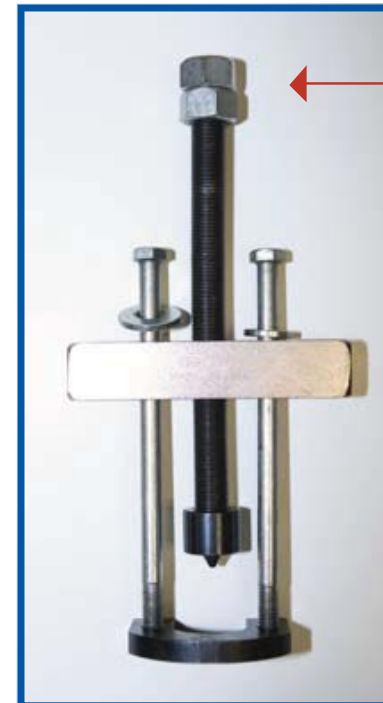
PERFORMANCE MACHINE LIMITED WARRANTY INFORMATION

Performance Machine Inc. warrants to the original purchaser that the parts of this Belt Drive Primary are free of manufacturing defects in materials and workmanship for a period of one (1) year from the date of purchase. In the event warranty service is required, you must call Performance Machine immediately with a description of the problem.

If it is deemed necessary for Performance Machine to make an evaluation to determine whether the part is defective, a return authorization number will be given by Performance Machine. The parts must be packaged properly so as to not cause further damage and returned prepaid to Performance Machine with a copy of the original invoice of purchase and a detailed letter outlining the nature of the problem. If after the evaluation by Performance Machine the part was found to be defective it will be repaired or replaced at no cost to you. If we replace it, we may replace it with a reconditioned one of the same design.

Performance Machine shall not be held liable for any consequential or incidental damages resulting from the failure of a Performance Machine part.

Performance Machine shall have no obligation if a part becomes defective as a result of improper installation or abuse.



RECOMMENDED USE OF SPECIAL TOOL

Inner bearing race remover/installer



CONTACT INFORMATION

Performance Machine Inc.

6892 Marlin Circle

La Palma, California

90623 - USA

Toll Free: 800-479-4037

Direct: 714-523-3000

Fax: 714-523-3007

Email: tech@performancemachine.com

Website: performancemachine.com



CONTOUR BELT DRIVE PRIMARY

For 2007-2009 Softail, 2006-2009 Dyna Stock Offset Only (Not Phatail)

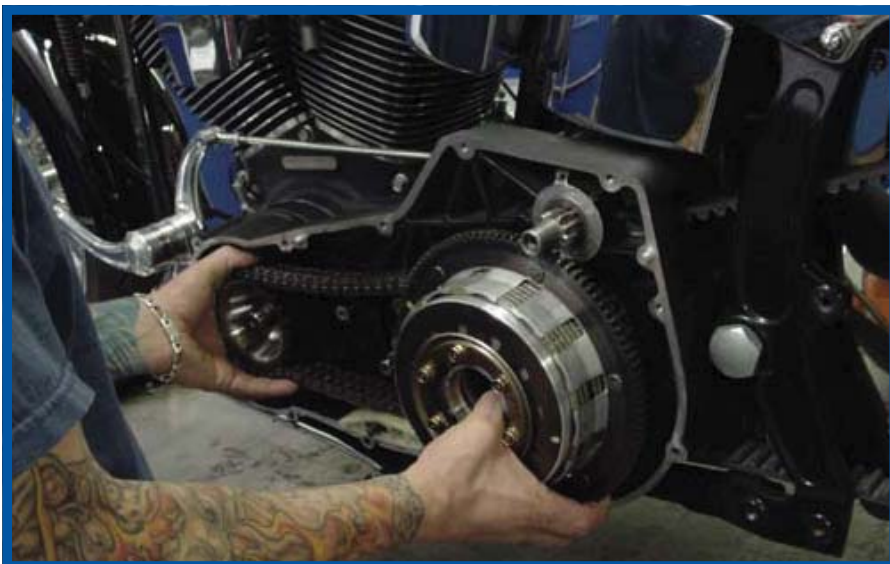
ATTENTION: This instruction sheet is written under the assumption that you will be replacing a traditional primary. If you are doing a ground up custom build, this page of information will not be used.

WARNING: To install the Performance Machine Belt Drive Primary it will be necessary to raise the motorcycle off the ground on a suitable lift. Be sure to center the motorcycle on the lift so that it does not fall over when you raise it up or when you are working on it.

NOTE: Installation of the PM Contour Belt Drive Primary begins with the disassembly and removal of the entire primary drive. For detailed information on removal of these parts, consult your factory manual.

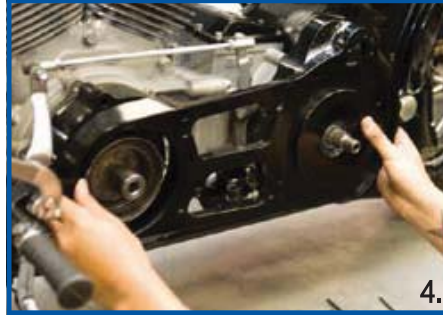
STOCK COMPONENT REMOVAL

1. Disconnect the battery and drain oil from primary
2. Remove the following:
 - Seat
 - Battery
 - Pipes (if they block access to starter motor)
 - Oil Tank (if it blocks access to starter motor bolts)
 - Outer Primary
 - Clutch assembly, motor sprocket and chain (**NOTE:** Crankshaft nut is standard thread direction and trans shaft nut is reverse thread)
 - Mainshaft bearing race
 - Inner Primary
 - Bolts from starter motor (from right side of bike)





1. Using an Inner Bearing Race Remover, completely remove the inner bearing race located on the transmission main shaft



4. Following the components drawing included in the instructions, attach the backing plate with the specified hardware listed on the drawing **NOTE:** The use of thread locking compound is highly recommended on the specified hardware when attaching the backing plate



7. Install the electric starter using the supplied bolts **NOTE:** Use of the 2 alignment dowel pins located between the starter and primary are required



10. Apply the main shaft nut and torque to 70 to 80 ft-lbs



2. Remove the rubber O-ring located on the electric starter to ease the installation of the backing plate in the following steps



5. Using thread locking compound, attach the 1/4-20 threaded stud to the primary. Then apply the specific spacer to the threaded stud. The spacer has flats machined in to it for tightening using a wrench.



8. Before applying the clutch basket and components, the use of thread locking compound is required on the transmission main shaft. **NOTE:** Not using thread locking compound will void any warranty with PM/BDL



Don't be scared, Rodney is here to help



3. Use of the OEM gasket between the motor and primary is required for the PM primary. Install the PM Backing plate



6. Tighten the compensating sprocket bolt to 155 to 165 ft-lbs with thread locking compound



9. Apply the clutch basket, front pulley and belt



11. Tighten the compensating sprocket bolt to 155 to 165 ft-lbs with thread locking compound

* If installing PM part # 0179-1908 on H-D Rocker Models, Installer must use supplied 9/16" X 3.0" Bolt, 9/16" washer and the stock compensator washer; then tighten.



12.

Apply the spring plate cover with the shoulder bolts and the starter cone using the 3 supplied 1/4-20 bolts (use thread locker and torque spring plate bolts to 25 to 30 ft-lbs and the starter cone bolts to 6-10 ft-lbs



14.

With the supplied 12 stainless steel 8-32 bolts attach the front and rear covers. Torque to 10-13 in-lbs using thread locking compound. Install push rod adjuster screw and jam nut. Adjust screw until you feel light pressure, but can still turn the throw out cup by hand. This will create a zero preload condition, then tighten down the jam nut. It may be necessary to readjust after the first ride.

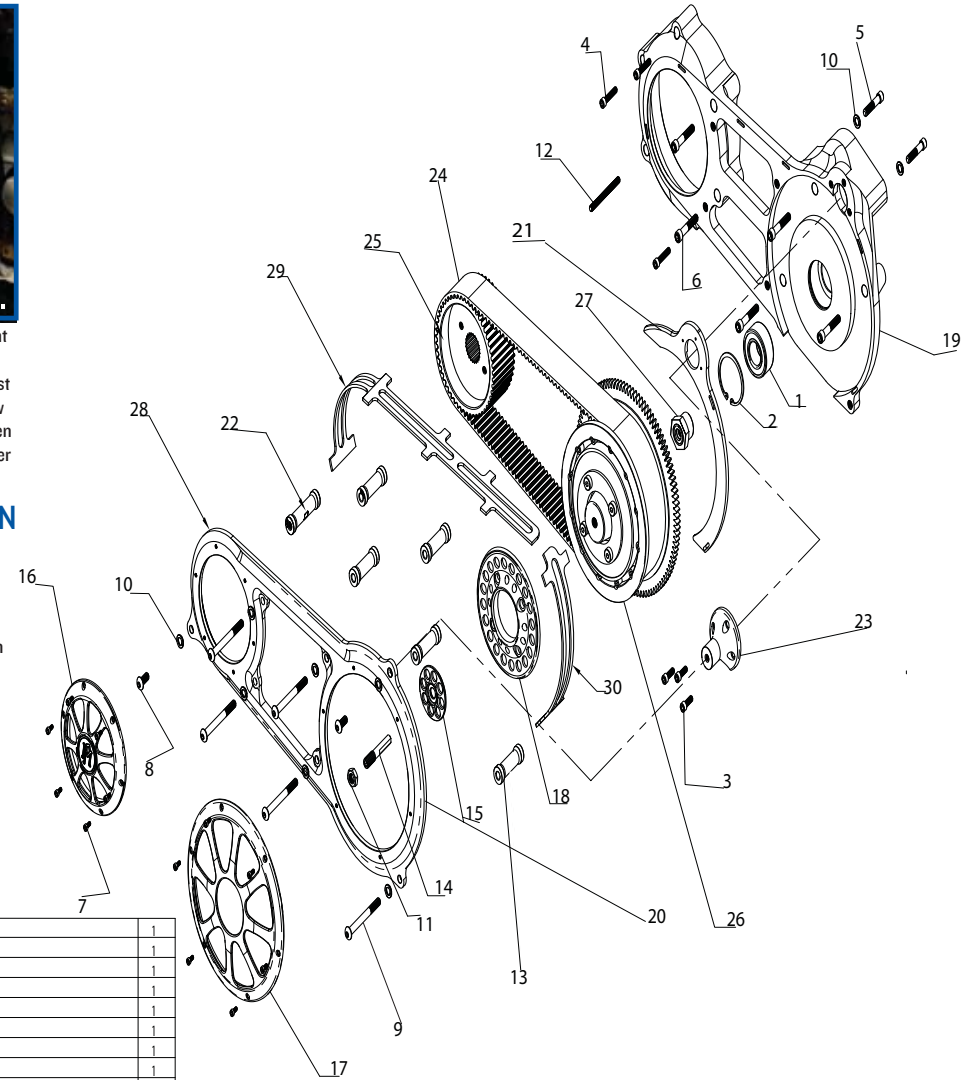


13.

Place the belt guards into position and fasten the outer plate using the supplied bolts and aluminum standoffs. Use thread locking compound and torque to 16-20 ft-lbs.

FINAL ASSEMBLY AND INSPECTION

Check kickstand for proper clearance
 Remove bike from lift and place in gear. Depress clutch and make sure it will roll. Adjust clutch if necessary.
 Test at slow speeds, in short intervals. Visually inspect belt drive primary after road testing. During first 100 mile break in inspect belt for any abnormal wear.
 It may be necessary to re-adjust clutch during initial break in period.



ITEM NO.	PART NUMBER	DESCRIPTION	QTY
1	0071-5205-1M	BALL BRG 52MMx1x13/16 DOUBLE ROW SEALED	1
2	0072-0005M	SNAP RING 2" INTERNAL ZINC PLATE	1
3	0101-1008M-CH	SHCS 1/4-20 X 3/4 CHROME	3
4	0101-1014M	SHCS 1/4-20 X 1-1/4 ZINC PLATE	3
5	0101-2008M	SHCS 5/16-18 X 1-1/2 GRADE 8 ZINC	2
6	0101-2010M	SHCS 5/16-18 X 1-3/4 ZINC PLATE	5
7	0101-9024M-SS	SHCS 8-32 X 3/8 18-8 STAINLESS	12
8	0102-2000M-CH	BHCS 5/16-18 X 3/4 CHROME	2
9	0102-2044M-CH	BHCS 5/16-18 X 3-1/4 CHROME	5
10	0106-2003M	WASHER .33 X .56 X .06 AL FLAT	9
11	0107-4002M	NUT 7/16-20 X 1/4 IAM ZINC PLATED	1
12	0108-1300M	STUD 1/4-20 X 3 18-8 STAINLESS	1
13	0179-1109M-B	SPACER INNER TO OUTER PLATE, PM PRIMARY - BDL	5
14	0179-1049M	CLUTCH BELT COVER, PM PRIMARY - BDL	1

15	0179-1090M-BM	CLUTCH CENTER COVER-PM PRIMARY 2007-09 BDL	1
16	0179-1091M-BM	FRONT COVER - PM PRIMARY - BDL	1
17	0179-1092M-BM	REAR COVER - PM PRIMARY - BDL	1
18	0179-1093M	SPRING PLATE COVER- PM PRIMARY - BDL	1
19	0179-1116M-B	MOTOR PLATE - INNER, PM PRIMARY - BDL 2007-09	1
20	0179-1117M-B	OUTER PLATE, PM PRIMARY - BDL 2007-09	1
21	0179-1118M-B	PRIMARY RING COVER, PM PRIMARY-BDL 2007-09	1
22	0179-1119M-B	SPACER INNER TO OUTER PLATE, PM PRIMARY-BDL 2007-09	1
23	0179-1120M-B	SPACER INNER TO OUTER PLATE, PM PRIMARY-BDL 2007-09	1
24	0179-1121M	2" BELT X 142 TOOTH, PM PRIMARY-BDL 2007-09	1
25	0179-1122M	52T FRONT PULLEY, PM PRIMARY-BDL 2007-09	1
26	0179-1123M	BDL 69T REAR CLUTCH KIT, PM PRIMARY - BDL 2007-09	1
27	0179-1136M	BDL REAR DRIVE NUT	1
28	0179-1114-B	FRONT BELT GUARD, PM PRIMARY - BDL 2007-09	1
29	0179-1115-B	REAR BELT GUARD, PM PRIMARY - BDL 2007-09	1



Apply the spring plate cover with the shoulder bolts and the starter cone using the 3 supplied 1/4-20 bolts (use thread locker and torque spring plate bolts to 25 to 30 ft-lbs and the starter cone bolts to 6-10 ft-lbs)



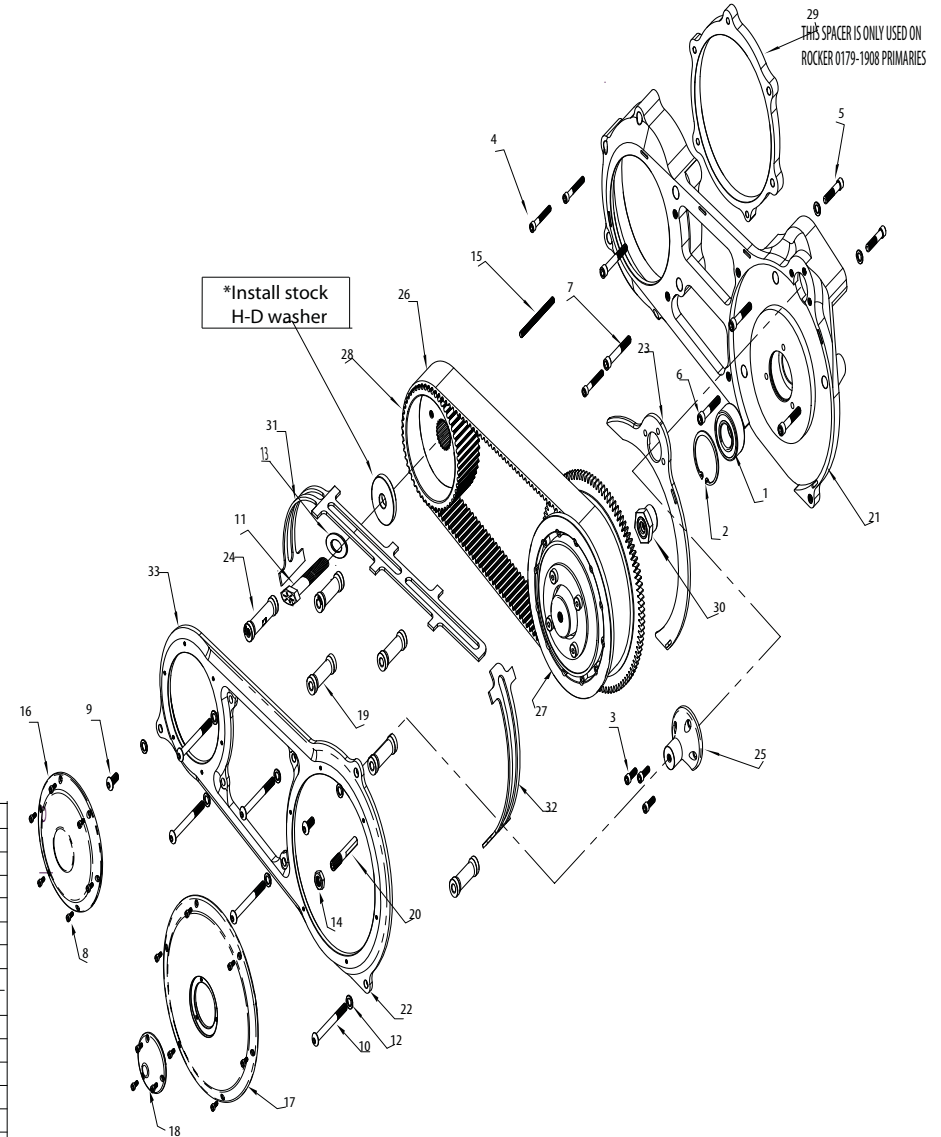
With the supplied 12 stainless steel 8-32 bolts attach the front and rear covers. Torque to 10-13 in-lbs using thread locking compound. Install push rod adjuster screw and jam nut. Adjust screw until you feel light pressure, but can still turn the throw out cup by hand. This will create a zero preload condition, then tighten down the jam nut. It may be necessary to readjust after the first ride.



Place the belt guards into position and fasten the outer plate using the supplied bolts and aluminum standoffs. Use thread locking compound and torque to 16-20 ft-lbs.

FINAL ASSEMBLY AND INSPECTION

Check kickstand for proper clearance
 Remove bike from lift and place in gear. Depress clutch and make sure it will roll. Adjust clutch if necessary.
 Test at slow speeds, in short intervals. Visually inspect belt drive primary after road testing. During first 100 mile break in inspect belt for any abnormal wear.
 It may be necessary to re-adjust clutch during initial break in period.



ITEM NO.	DESCRIPTION	QTY.
1	BALL BRG 52MMx.97x13/16 BDL 2008-09	1
2	SNAP RING 2" INTERNAL, ZINC PLATE	1
3	SHCS 1/4-20 X 3/4 CHROME	3
4	SHCS 1/4-20 X 1-3/4, ZINC PLATED	3
5	SHCS 5/16-18 X 1-1/2 GRADE 8 ZINC	2
6	SHCS 5/16-18 X 3-1/4 ZINC PLATE	3
7	SHCS 5/16-18 X 2-1/4 CHROME	2
8	SHCS 8-32 X 3/8, 18-8 STAINLESS	15
9	BHCS 5/16-18 X 3/4 CHROME	2
10	BHCS 5/16-18 X 3-1/4 CHROME	5
11	BOLT 9/16 X 3 HEX, GRADE 8 BLACK	1
12	WASHER .33 X .56 X .06 AL, FLAT	9
13	WASHER .59 X 1.16 X .08 THK, BLACK	1
14	NUT 7/16-20 X 1/4 JAM, ZINC PLATED	1
15	STUD 1/4-20 X 3-1/2, 18-8 STAINLESS	1

16	FRONT COVER - PM PRIMARY - BDL	1
17	REAR COVER - PM PRIMARY - BDL	1
18	INSPECTION COVER - PM PRIMARY - BDL	1
19	SPACER INNER TO OUTER PLATE, PM PRIMARY - BDL	5
20	CLUTCH PUSH ROD END LT .70 THD, PM PRIMARY-BDL	1
21	MOTOR PLATE - INNER, PM PRIMARY - BDL 2007-09	1
22	OUTER PLATE, PM PRIMARY - BDL 2007-09	1
23	PRIMARY RING COVER, PM PRIMARY-BDL 2007-09	1
24	SPACER INNER TO OUTER PLATE FR, PM PRIMARY - BDL 2007-09	1
25	SPACER INNER TO OUTER PLATE, PM PRIMARY-BDL 2007-09	1
26	2" BELT X 142 TOOTH, PM PRIMARY-BDL 2007-09	1
27	BDL 69T REAR CLUTCH KIT, PM PRIMARY - BDL 2007-09	1
28	52T X 8mm FRONT PULLEY-ROCKER, PM PRIMARY - BDL 2008-09	1
29	MOTOR SPACER, ROCKER, PM PRIMARY - BDL ROCKER 2008-09	1
30	BDL REAR DRIVE NUT	1
31	FRONT BELT GUARD, PM PRIMARY -BDL 2007-09	1
32	REAR BELT GUARD, PM PRIMARY -BDL 2007-09	1
33	PM PRIMARY ROCKER BDL 2008-09	1

For questions pertaining to the installation of this product, please contact our technical department at 1-800-479-4037