

Copyright © 2014 by Big Bike Parts, Inc. No part of this instruction sheet may be reproduced without the written permission of Big Bike Parts, Inc.

PART NO. 16-201**BRAKE LIGHT MODULATOR****FITMENT: UNIVERSAL**

7/14/2014

TOOLS NEEDED: WIRE CUTTER

CRIMPER

HEAT GUN

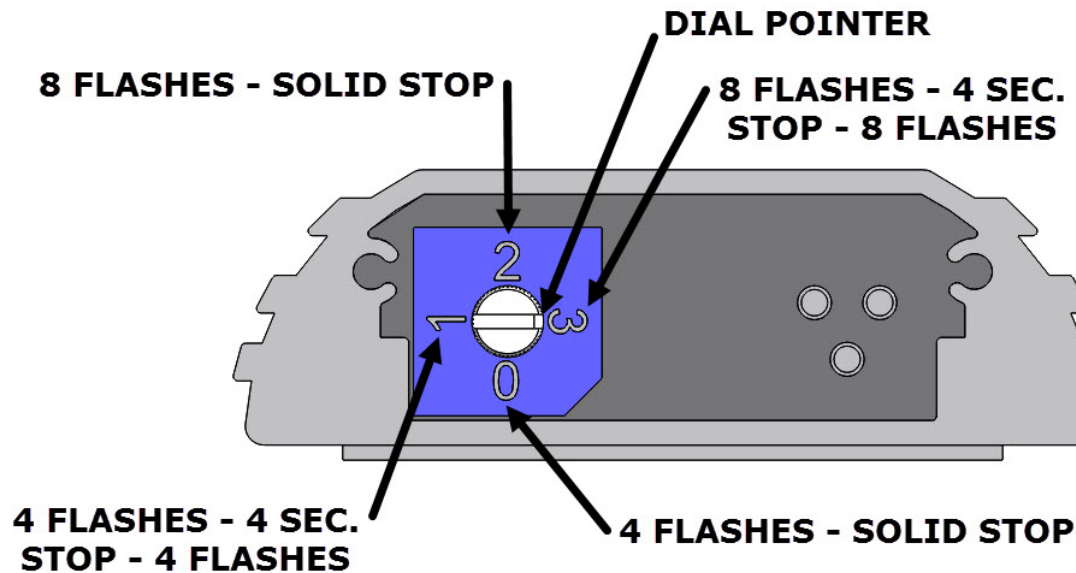
RUBBING ALCOHOL

SMALL FLAT SCREWDRIVER

PLEASE READ THROUGH AND UNDERSTAND THESE INSTRUCTIONS BEFORE BEGINNING.

THIS MODULATOR HAS A 10 AMP MAX. CAPACITY.**INSTALLATION:**

1. TO USE THIS MODULATOR YOUR BRAKE LIGHT MUST HAVE A SEPARATE WIRE FOR THE BRAKE AND RUNNING LIGHTS. (NON CANBUS)
2. LOCATE THE WIRE OR WIRES GOING TO THE LIGHTS YOU WANT TO MODULATE. THE BEST PLACE IS UNDER THE DRIVERS SEAT.
NOTE: IF THE BIKE USES DOUBLE FILAMENT RUNNING/BRAKE LIGHT BULBS YOU WILL NEED TO FIND THE BRAKE LIGHT WIRE.
3. FIND A LOCATION TO MOUNT THE MODULATOR. MAKE SURE THAT NOTHING WILL RUB OR HIT THE MODULATOR.
4. CLEAN THE MOUNTING SURFACE ON THE BIKE AND THE MOUNTING SURFACE ON THE MODULATOR WITH RUBBING ALCOHOL AND LET DRY.
5. USING THE DOUBLE-SIDED TAPE PROVIDED MOUNT THE MODULATOR TO THE BIKE.
6. CUT THE WIRE GOING TO THE BRAKE LIGHT WITH A WIRE CUTTER.
7. STRIP BOTH WIRES ENDS BACK ABOUT ¼" OF AN INCH.
8. USING 1 OF THE CONNECTORS SUPPLIED WITH THE MODULATOR CONNECT THE WHITE WIRE TO THE WIRE GOING TO THE BRAKE LIGHT.
9. USING ANOTHER CONNECTOR CONNECT THE RED WIRE TO THE END GOING TO THE FRONT OF THE BIKE.
10. CONNECT THE BLACK WIRE TO A GROUND.
11. THE MODULATOR HAS 4 SETTINGS FOR FLASH PATTERNS. SEE FIG. 1
12. THE SETTINGS ARE: "0" = 4 FLASHES THEN BRAKE LIGHT STAYS ON, "1" = 4 FLASHES THEN SOLID BRAKE LIGHT FOR 4 SECONDS AND REPEAT, "2" = 8 FLASHES THEN BRAKE LIGHT STAYS ON, "3" = 8 FLASHES THEN SOLID BRAKE LIGHT FOR 4 SECONDS AND REPEAT.
13. SELECT THE SETTING YOU WANT TO USE BY TURNING THE DIAL WITH A SMALL FLAT SCREWDRIVER.
14. TURN IGNITION SWITCH ON AND TEST THE BRAKE LIGHT.
15. USING A HEAT GUN TO SHRINK THE PLASTIC CASE ON THE BUTT CONNECTORS.
16. MAKE SURE WIRES ARE TUCKED AND TIED SO THAT THEY DO NOT RUB OR CATCH ON ANYTHING WHEN THE BIKE IS IN USE.

**FIG. 1**

Scan code with your smartphone to view video

