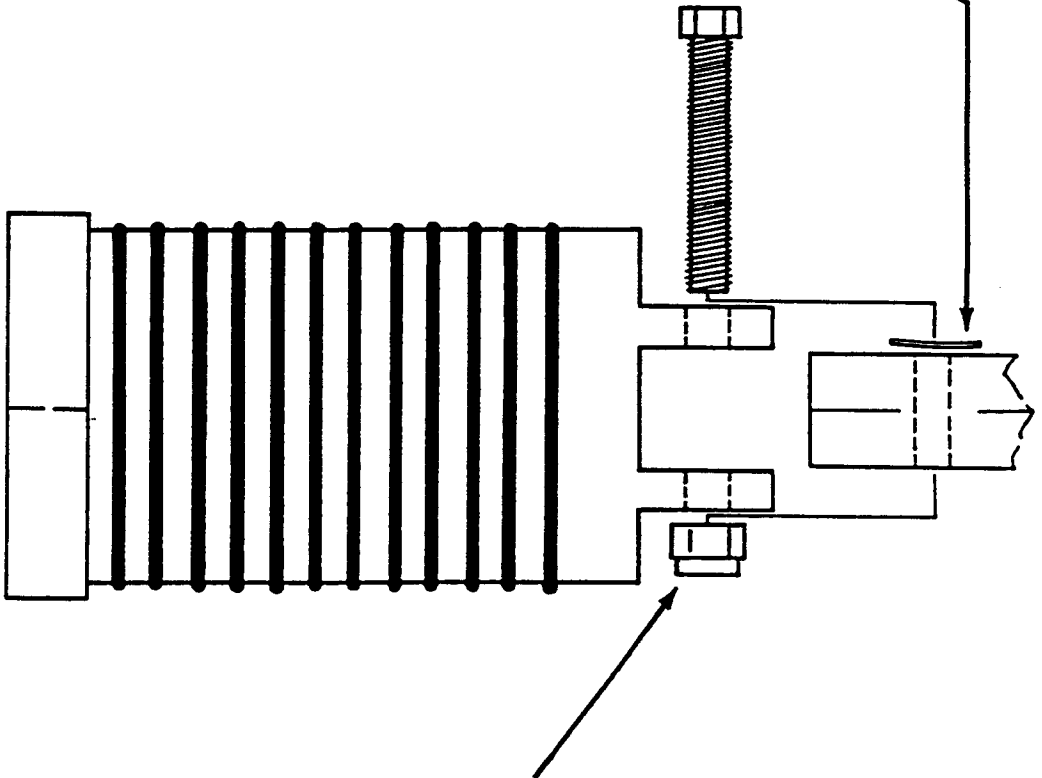


CUSTOM CHROME

Instructions

INSTALLATION OF BLACK DIAMOND™ FOOTPEGS

Step 1. Small spring washer must be installed between mounting block and footrest tabs as illustrated.



Step 2. Tighten lock nut snug (10 foot pounds)

IMPORTANT: Do not over tighten this pinch bolt; spring washer will provide necessary tension.