

# INSTRUCTION SHEET





## FLOORBOARD MOUNTING KIT FOR 2015+ INDIAN SCOUTS & 2016+ SCOUT 60

### INCLUDED COMPONENTS:

- |                                   |                            |
|-----------------------------------|----------------------------|
| (1) Left Side Floorboard bracket  | (1) Master Cylinder Offset |
| (1) Right Side Floorboard Bracket | (1) Hardware Kit           |
| (1) Shift Linkage Rod             | (1) Instruction Packet     |

### NOTE:

### QUESTIONS?

-  **EMAIL:**  
info@getklocked.com
-  **CALL:** (605) 996.3700



### LEFT SIDE REMOVAL/ASSEMBLY

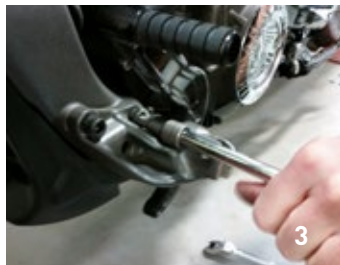
1. Remove stock footpeg **(1)**
2. Remove shift linkage and unthread both heim joints and locknuts. These will be reused. **(2a & 2b)**
3. Remove left side footpeg mount **(3)**
4. Using a vice or other suitable holding fixture, remove shift lever from footpeg mount. Shift lever and hardware will be reused. **(4)**
5. Install shift lever onto left side floorboard bracket reusing stock hardware. Set aside **(5)**
6. Remove left side lower motor mount bolt **(6)**
7. Install motor mount bolt through the rear hole on the floorboard bracket and reinstall through the frame **(7)**
8. Use the 10mm bolts removed in step 3 and align the floorboard bracket to the frame. Torque motor mount bolt to factory specifications **(7)**
9. Remove both 10mm bolts, install them through the stock footpeg mount and through the left side floorboard bracket **(8)**



2a



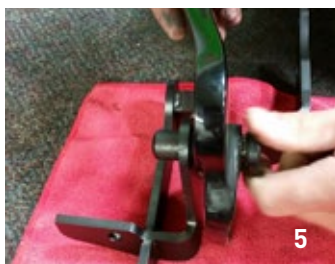
2b



3



4



5



6



7

10. Insert provided 8mm x 45mm bolt through the footpeg mount and block on the floorboard bracket to help align the assembly **(8)**
11. Torque 10mm bolts to factory specifications
12. Install flat washers and locknut to the 8mm bolt and torque to 15-20 ft-lbs
13. **a.** Install provided shift rod using heim joints and jam nuts removed in step 2.  
**b.** Install provided 1/4" spacer behind rear heim joint and fasten with provided 6mm x 25mm flanged hex bolt. **(9)**  
**c.** Adjust shift lever to desired height and snug jam nuts

### RIGHT SIDE REMOVAL/ASSEMBLY

1. Remove stock footpeg
2. To aid installation, remove the p-clamp that holds the brake line to the frame **(10)**  
**a.** It is NOT necessary to remove the hydraulic line from the master cylinder
3. Loosen, but do not remove the master cylinder hardware on the foot peg bracket **(11)**
4. Remove the footpeg mount from the frame **(12)**

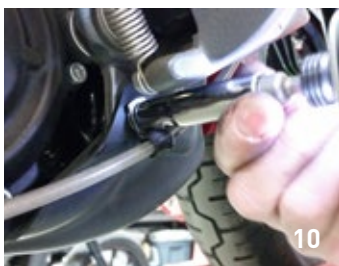
## INSTRUCTION SHEET



5. Remove the bolt and flange spacer that secure the master cylinder to the brake lever  
**a.** Flange spacer and bolt will be reused



6. Remove the master cylinder from the foot peg mount and remove the return spring  
 7. Install the provided brake lever offset onto the master cylinder **(13)**



- a.** Remove the stock eyelet from the plunger, but leave the existing jam nut installed  
**b.** Thread the provided offset block onto the plunger and align with the threaded portion directly underneath  
**c.** Install the provided jam nut to the offset block and reinstall the stock plunger eyelet  
**d.** Align eyelet and snug the jam nut



8. Remove the lower return spring screw and replace with provided 6mm x 25mm bolt **(14)**

- a.** Use thread locking agent and install screw until it bottoms into the footpeg mount



9. Switch flange spacer on the brake lever to have the flange toward the inside of the assembly **(15)**



10. Install the 6mm flange bolt removed in step 5 with the provided high-collar lockwasher and torque to factory specifications  
**a.** This is now the upper return spring mount **(13)**

11. Install return spring onto the upper mount at this time

12. Hand tighten master cylinder onto the stock foot peg mount and set assembly aside

13. Remove right side lower motor mount bolt

14. Loosely install motor mount bolt through the rear hole on the floorboard bracket and install back onto the frame **(16)**



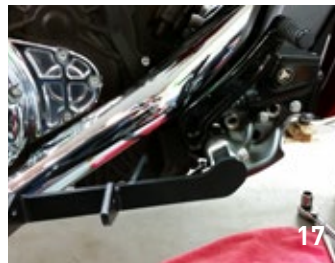
15. Using the 10mm fasteners removed in step 4, align the right side bracket to the frame and torque motor mount bolt to factory specification **(16)**



16. Remove 10mm bolts and set aside  
 17. Slide the footpeg/master cylinder assembly from below onto the floorboard bracket **(17)**



18. Insert provided 8mm x 45mm bolt through the footpeg mount and block on the floorboard bracket to help align the assembly **(17)**  
 19. Reinstall 10mm bolts removed in step 16 and torque to factory specifications



20. Install the provided flat washers and locknut to the 8mm bolt installed in step 18 and torque to 15-20 ft-lbs

21. Install return spring to lower mount bolt **(18)**

22. Reinstall brake line p-clamp

### FLOORBOARD INSTALLATION

1. Install full-size Indian floorboards using the provided M8 x 120mm bolt, flat washers, locknut and bushings **(19)**



**CAUTION:** Klock Werks cannot be held responsible for any damage to painted surfaces during removal or addition of Klock Werks parts.