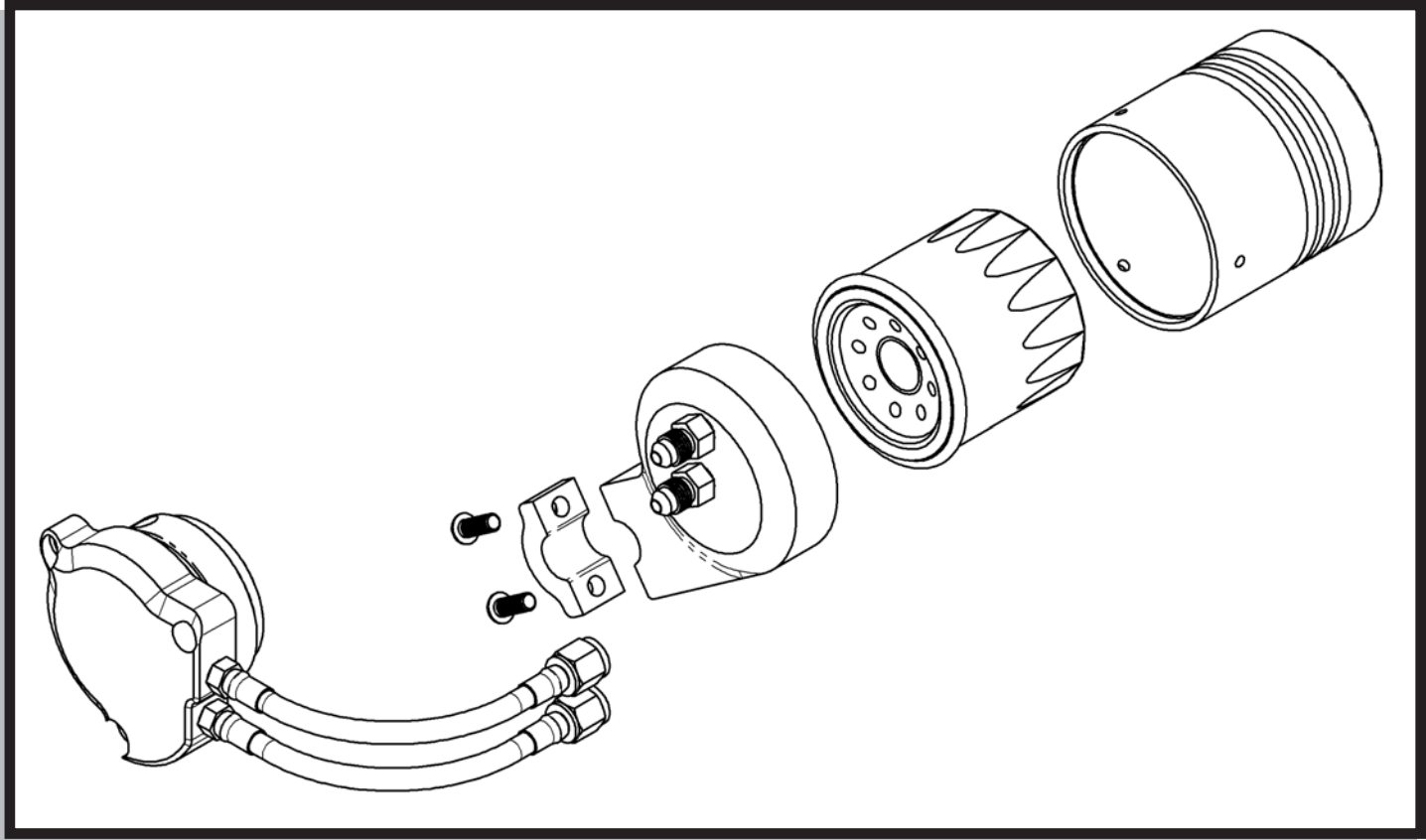




64-2103-01

OIL FILTER RELOCATION KIT

1999-07 YAMAHA V-STAR 1100  
CUSTOM / CLASSIC / SILVERADO



**PARTS INCLUDED**

Ref.	Part Number	Description	Qty
1)	00-100-00065	Oil Filter Adapter w/ Stainless Steel Braided Oil Lines	1
2)	04-25-36292	Oil Filter Mount	1
3)	04-25-36297	Oil Filter Mount Clamp	1
4)	07-45-10-82230	Oil Filter	1
5)	00-100-00067	Oil Filter Cover	1
6)	01-5106100016-SS	M6-1.0x16mm Socket Button Head Cap Screw	4

**TOOLS REQUIRED**

Ref.	Description	Ref.	Description
1)	3/8" Drive Ratchet	6)	3/32" Allen Wrench
2)	10mm Socket	7)	9/16" Wrench
3)	12mm Socket	8)	11mm Wrench
4)	5mm Allen Wrench	9)	Shop Rags
5)	6mm Allen Wrench	10)	Oil

08-50-43014 REV. B

64-2103-01

## OIL FILTER RELOCATION KIT

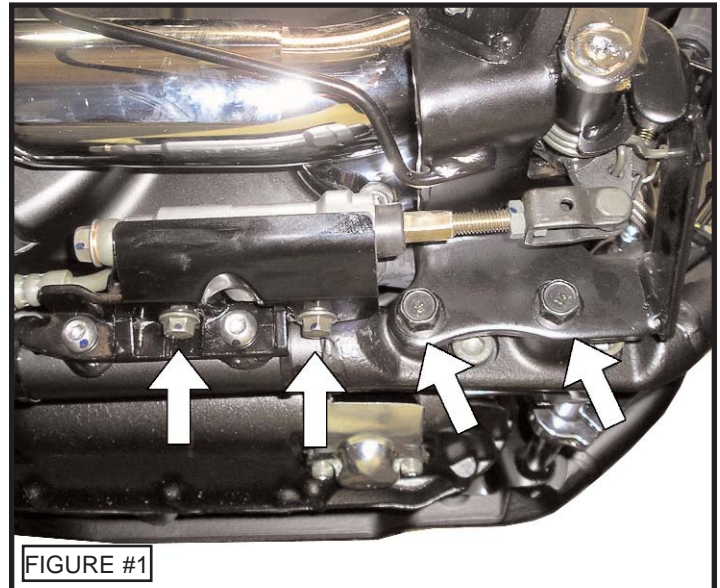
1999-07 YAMAHA V-STAR 1100  
CUSTOM / CLASSIC / SILVERADO

### INSTALLATION INSTRUCTIONS

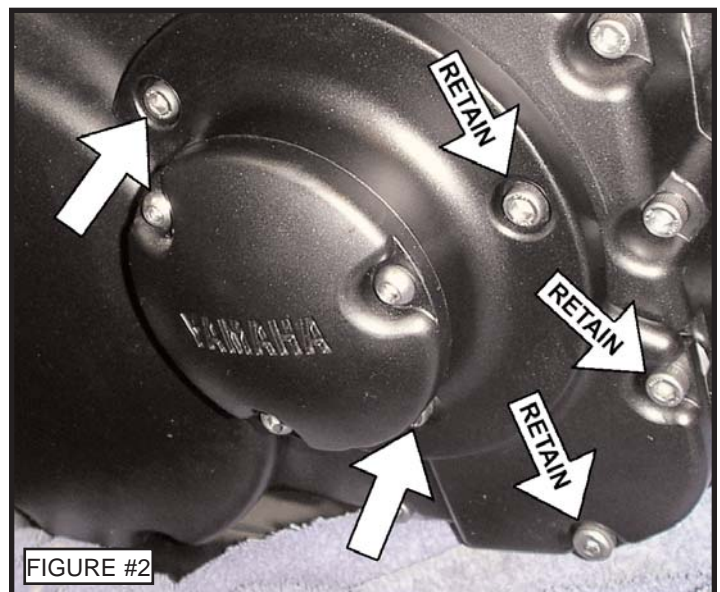
- 1) Make sure the motorcycle is cool and place securely on a service lift or stand.
- 2) Remove the four bolts indicated in Figure #1 and carefully remove the right side rider peg assembly from the motorcycle frame.

**NOTE:** Be careful not to pinch the rear brake line or stretch the brake like switch wire.

- 3) Loosen the two clamps securing the mufflers to the headpipes. Remove the two bolts securing the mufflers to the motorcycle frame. Remove the muffler assembly from the motorcycle.



- 4) Remove the front headpipe flange bolt and nut, then remove the front headpipe from the motorcycle.
- 5) Remove the five bolts that secure the stock oil filter cover to the right side of the motor. Retain the indicated bolts and remove the side cover from the motor. See Figure #2.
- 6) Remove the inner oil filter cover and the oil filter from the motor. See Figure #3.
- 7) Remove the red and black o-ring seals from the inner oil filter cover. Inspect the o-rings for any wear and replace if necessary. See Figure #3.
- 8) Apply a small amount of oil to the red and black o-rings and place them onto the new oil filter adapter as shown in Figure #4.



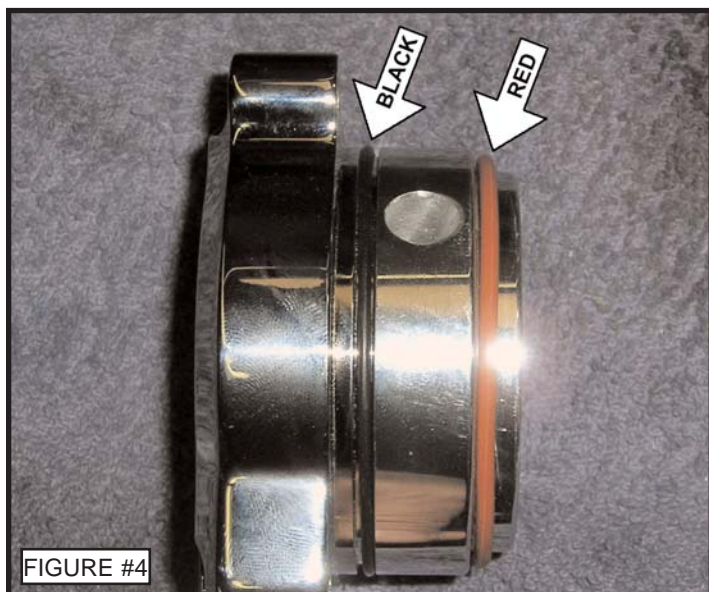
64-2103-01

## OIL FILTER RELOCATION KIT

1999-07 YAMAHA V-STAR 1100  
CUSTOM / CLASSIC / SILVERADO

### INSTALLATION INSTRUCTIONS

- 10) Insert the oil filter adapter into the cavity left by the stock oil filter. Secure the oil filter adapter using the three bolts retained from the outer side cover. See Figure #5 for bolt placement.
- 11) Insert the oil filter adapter into the cavity left by the stock oil filter. Secure the oil filter adapter using the three bolts retained from the outer side cover. See Figure #5 for specific bolt placement. Tighten bolts to factory specification.
- 12) The oil filter adapter no longer uses the two uppermost side cover mounting holes on the motor. Use the two supplied M6-1.0x16mm button head bolts to plug these two holes. Tighten bolts to factory specification.
- 13) Loosely mount the new oil filter mount assembly to the lower front frame crossmember. See Figure #6.
- 14) Attach the upper oil line to the upper fitting on the oil filter adapter. Attach the lower oil line to the lower fitting. Fully tighten the fittings. See Figure #7.
- 15) Position the oil filter mount and fully tighten the two clamp mounting bolts.
- 16) Apply a small amount of oil to the o-ring on the supplied oil filter and spin the filter onto the oil filter mount until it is fully seated.



64-2103-01

## OIL FILTER RELOCATION KIT

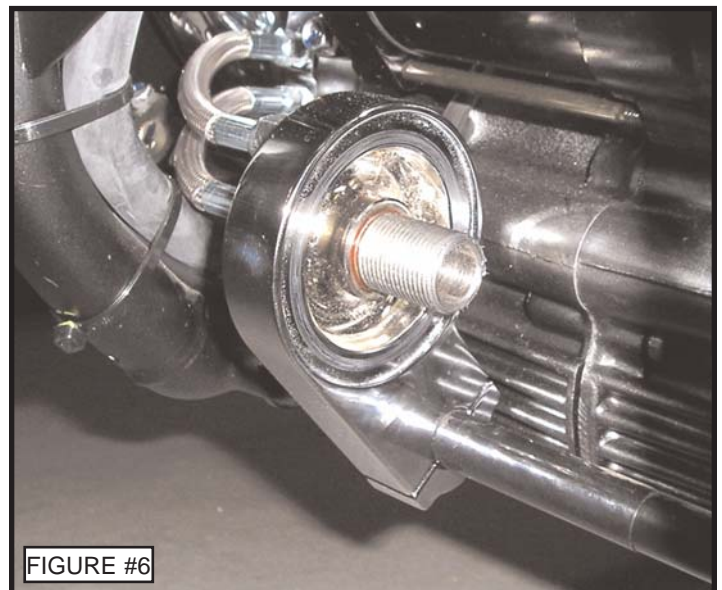
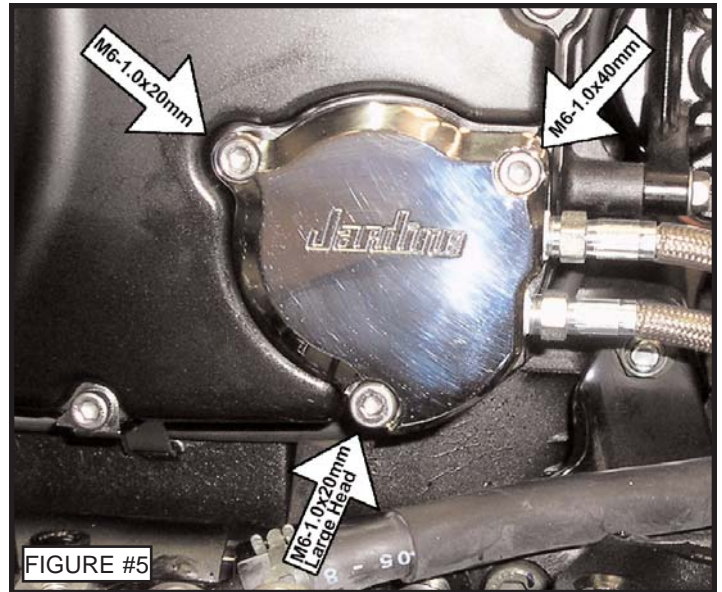
1999-07 YAMAHA V-STAR 1100  
CUSTOM / CLASSIC / SILVERADO

### INSTALLATION INSTRUCTIONS

- 17) Remove the three set screws on the perimeter of the oil filter cover and apply a drop of blue loc-tite prior to installing the cover. Slide the oil filter cover over the oil filter and tighten the set screws evenly until secure. See Figure #8

**NOTE: DO NOT** overtighten the set screws. If you overtighten the set screws you can puncture the oil filter.

- 18) Double check that all mounting bolts are fully tightened.
- 19) Reinstall the exhaust system and the rider footpeg assembly in the reverse fashion that it was removed. Tighten all bolt to factory specification.
- 20) Clean all fingerprints and grease from the motorcycle prior to starting the engine.
- 21) Fill the crankcase with oil as per your owners manual, and let it idle long enough for oil to be plumbed through the oil lines and filter. Turn off the motorcycle to check the oil level and add as needed.

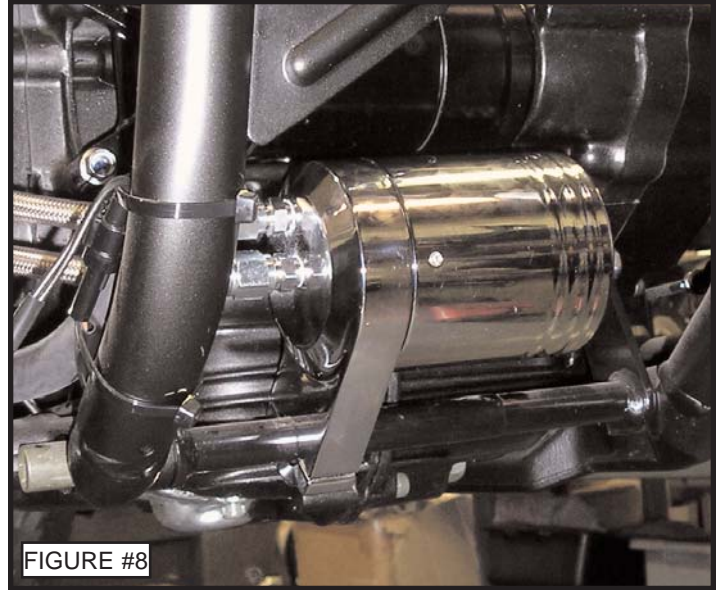


64-2103-01

OIL FILTER RELOCATION KIT

1999-07 YAMAHA V-STAR 1100  
CUSTOM / CLASSIC / SILVERADO

INSTALLATION INSTRUCTIONS



**OIL FILTER CROSS REFERENCE PART #s**

**Yamaha:** 3FV-13440-00  
**Perf-Form:** J-503  
**Emgo:** 10-82232 / 10-82220  
**Fram:** PH6017A  
**K&N:** KN-303  
**Purolator:** ML16817  
**Amsoil:** SMF-103 / SMF-103C